



# PORTS-TO-PLAINS



## ALLIANCE

Securing the Benefits of Commerce to  
North America's Energy & Agriculture Heartland



# Heartland

EXPRESSWAY



# Theodore Roosevelt

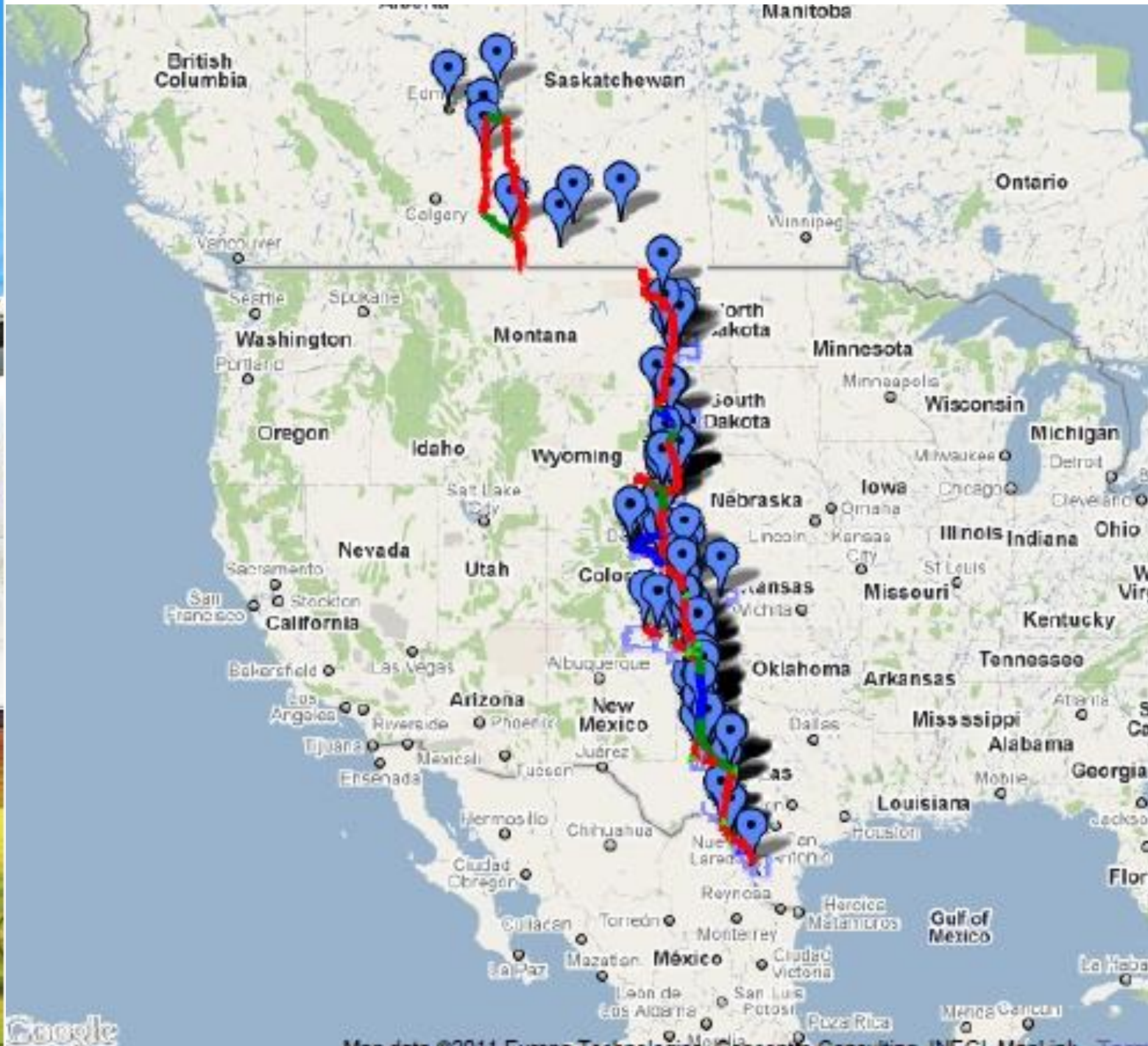
EXPRESSWAY



# Montana EDA Transportation Committee

# May 26, 2011







# Purpose of the Corridor

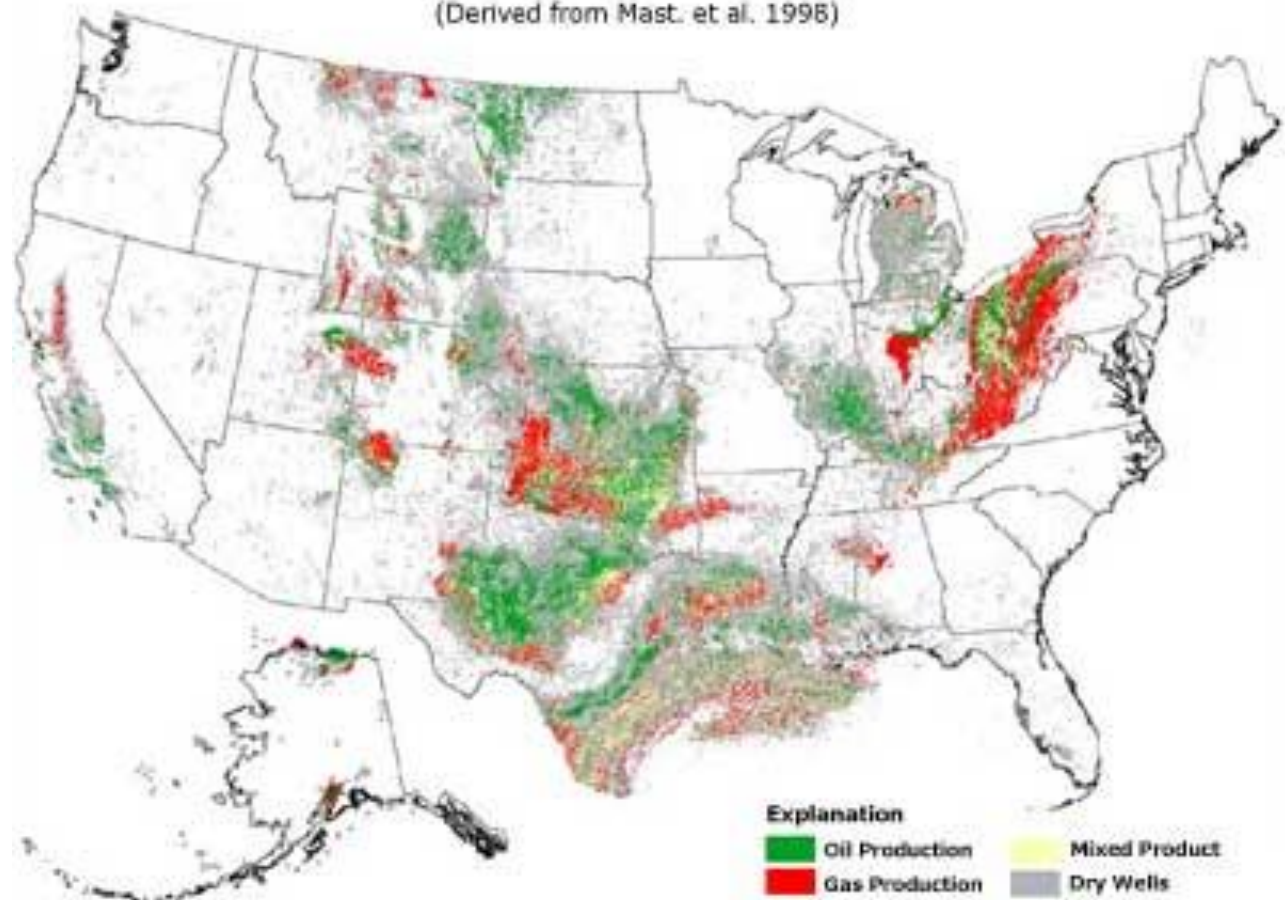


# Purpose of the Corridor



**Oil and Natural Gas Production in the United States**

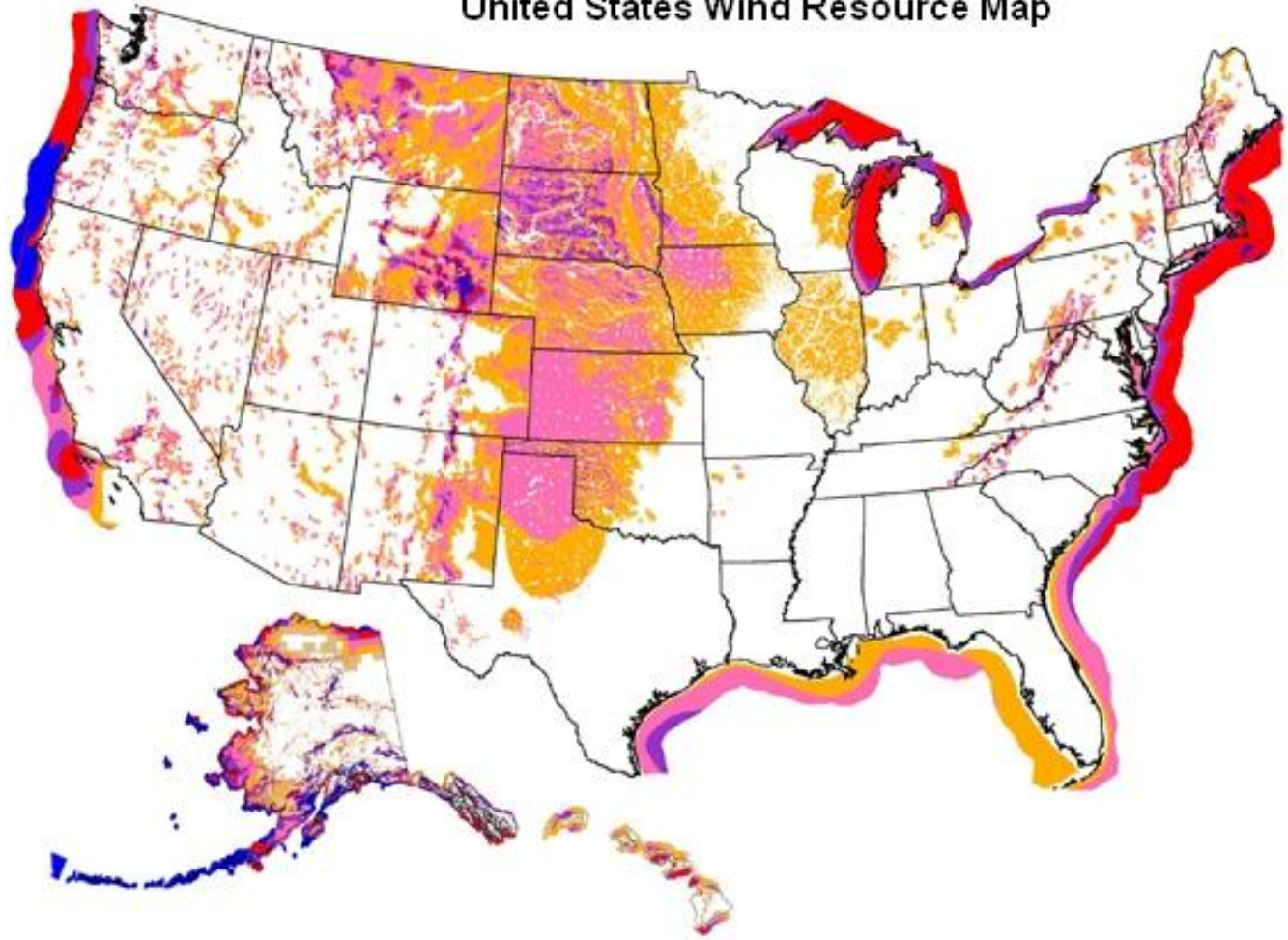
(Derived from Mast, et al. 1998)



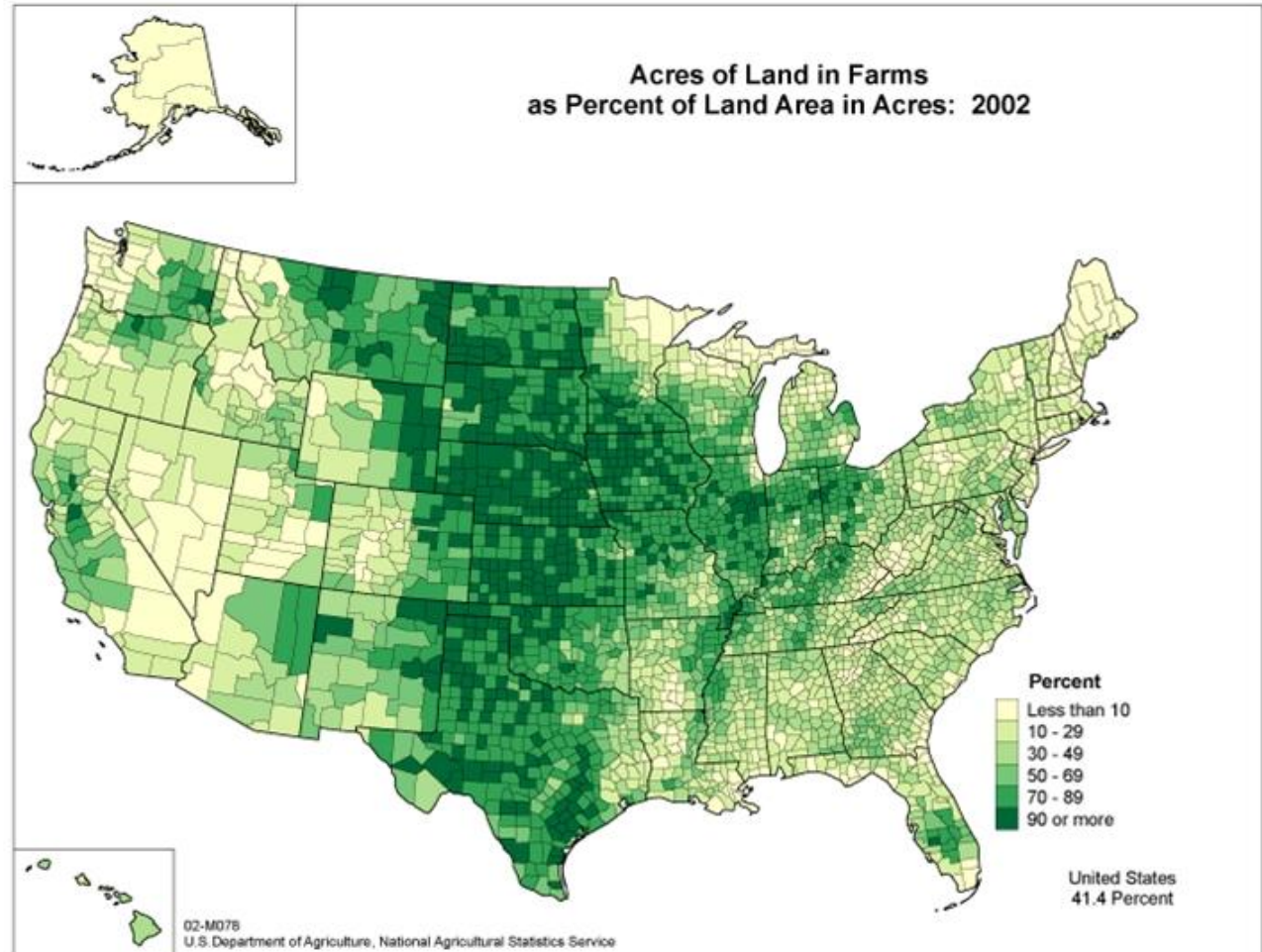
# Purpose of the Corridor



United States Wind Resource Map



# Purpose of the Corridor



# Purpose of the Corridor



## MONTANA TRADE

### Domestic Trade

### Top Trading Partners (Exports by Truck)

- #1 Wyoming
- #2 North Dakota
- #3 South Dakota



# Purpose of the Corridor

## MONTANA TRADE

Domestic Trade  
(10 State Region)



Destination by Truck	Total Current M\$ in 2009
Wyoming	\$1,223.68
North Dakota	\$208.30
South Dakota	\$141.11
Colorado	\$119.00
Texas	\$44.18
Nebraska	\$19.41
Kansas	\$13.52
New Mexico	\$11.61
Oklahoma	\$6.94
<b>TOTAL</b>	<b>\$1,787.74</b>



# Purpose of the Corridor

## MONTANA TRADE



Mexico (through Ports of Laredo, TX; Eagle Pass, TX and Del Rio, TX)

### Exports by Truck

2004	\$1.4 million
2008	\$9.8 million
Change	<b>581.1%</b>

### Imports by Truck

2004	\$2.9 million
2008	\$4.2 million
Change	<b>44.6%</b>

# Purpose of the Corridor

## MONTANA TRADE

Canada (through Ports of Sweetgrass, MT,  
Wild Horse, MT; Raymond, MT and Portal,  
ND)

### Exports by Truck

2004	\$108 million
2008	\$279 million
Change	<b>157.8%</b>

### Imports by Truck

2004	\$289 million
2008	\$530 million
Change	<b>83.7%</b>



# Purpose of the Corridor



## Wind Energy

Power Capacity - Existing projects  
(MW): 386

Rank In US (by Existing Capacity): 21

•Rank In US (by Potential Capacity): 3



# Purpose of the Corridor

## Energy

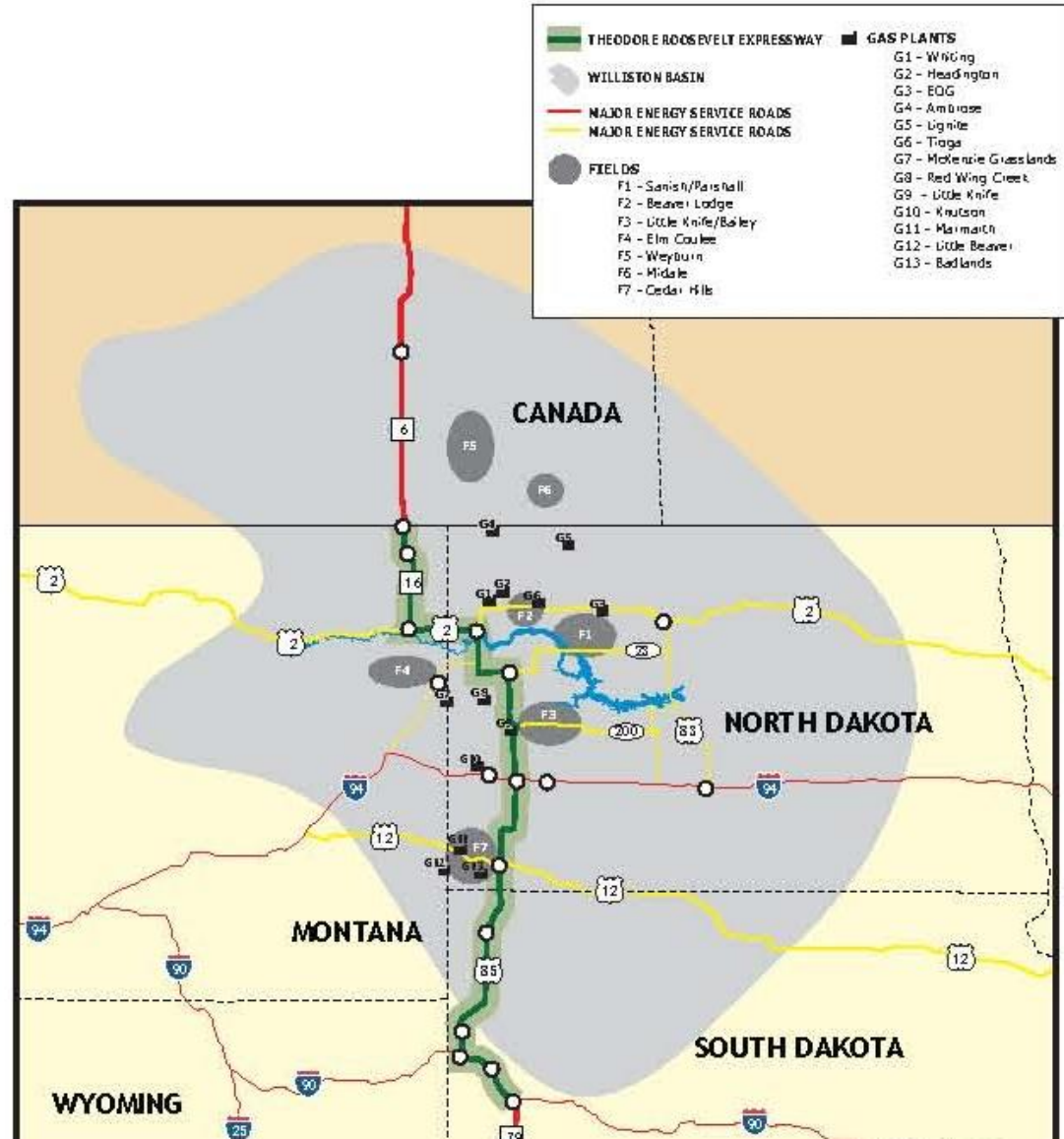
Montana accounts for about 4 percent of total U.S. coal production and delivers coal to markets in more than 15 States.

The Williston Basin covers eastern Montana (as well as western North Dakota) and contains three of the Nation's 100 largest oil fields, two of which are in Montana.

Montana is a major hydroelectric power producer.



# Purpose of the Corrido



# Purpose of the Corridor

## Energy Security

<b>All Countries</b>	4,267,110	
Canada	904,914	21.21%
Mexico	441,648	10.35%
Venezuela	387,856	9.09%
Saudi Arabia	366,605	8.59%
Nigeria	295,310	6.92%
Russia	205,525	4.82%
Algeria	180,018	4.22%
Angola	167,877	3.93%
Iraq	164,357	3.85%



# Purpose of the Corridor

## Agriculture

### Market Value of Products Sold - Montana

2007	\$2.8 billion
2002	\$1.9 billion
Change	49%
Crop Sales	\$1.3 billion (45%)
Livestock Sales	\$1.5 billion (55%)





# Advocacy Efforts



# Advocacy Effort



- These existing highways are inadequate to meet current and future needs of the region and the nation
- To promote economic security and prosperity throughout America's energy and agricultural heartland, these high priority corridors must be upgraded and modernized

# Advocacy Effort



## **An improved transportation network will produce significant benefits:**

- It will improve safety, cutting accidents by 50 percent from today's levels
- It will increase the efficiency of agricultural freight flow. Our corridor runs through six of the top ten farm states that produce nearly a quarter of all U.S. agriculture products

# Advocacy Effort



## **An improved transportation network will produce significant benefits:**

- It is necessary for the development of the traditional energy resources essential to our nation's energy security
- We serve seven of the top ten oil producing states
- The corridor also goes through five of the top six natural gas producing states
- A single oil well requires an estimated 1,200 truck movements to develop

# Advocacy Effort



## **An improved transportation network will produce significant benefits:**

- It is essential to developing the growing renewable energy industry.
- We serve nine of the top ten states for wind energy potential, and five of the top twelve installed wind generation states.
- A single wind tower requires eight trucks for major parts, not including the crane, concrete or rebar.

# Advocacy Effort



## **An improved transportation network will produce significant benefits:**

- It is a cost-efficient way to take pressure off of highly-congested parallel corridors, such as the I-25 and I-35 corridors
- It will promote economic development in a region of the country that has the highest rate of population loss over the last decade and ensure that America's heartland and its communities are connected to America by a modern, efficient and safe transportation facility

# Advocacy Effort



We support significant reform of the federal surface transportation programs, including development of a clear and compelling federal vision.

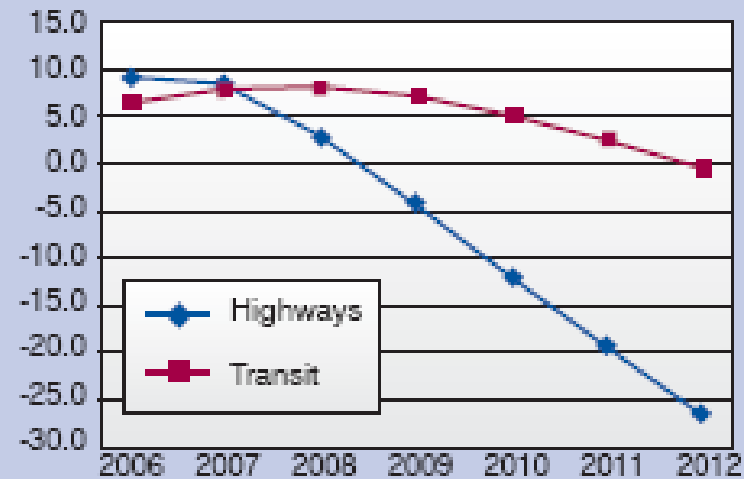
# Advocacy Effort

Programs would have to be cut by 25 percent or so over long term (without increased revenue)



Projections of Highway and Transit Account Balances Through 2012

Dollars, Billions



This exhibit shows projected balances in the Highway and Transit Accounts of the Highway Trust Fund through 2012 assuming no change in revenues or program levels.

# Advocacy Effort



## Policy Recommendations:

### Rural Connectivity and Mobility

- A major focus on upgrading and modernizing the transportation infrastructure that provides connectivity and mobility for America's small communities and rural areas

# Advocacy Effort



## Policy Recommendations:

- **Freight Transportation** – The new legislation should also include a major focus on freight movement, including freight corridors in rural areas, especially High Priority Corridors on the National Highway System.

# Advocacy Effort



## Policy Recommendations:

- **Border Infrastructure --** Border infrastructure is critical to promote the safe, efficient movement of goods, facilitating trade and supporting jobs in North America.

# Advocacy Effort



## Policy Recommendations:

- Rural Safety -- The new legislation should include a major focus on highway safety, especially safety on two-lane rural roads which often have fatality rates well above urban interstates.
- These overburdened two-lane roads are carrying much of the food and fuel destined for our nation's major metropolitan areas.

# Advocacy Effort



## Policy Recommendations:

- Environment/Energy – It is critically important, however, that climate change requirements—whether included in surface transportation legislation, climate change legislation, or energy legislation—recognize that the options in rural areas are different than the options in major metropolitan areas.
- A one size fits all approach to climate change will not work.



# Ports-to-Plains Alliance

**Ports-to-Plains Trade Corridor**

**[www.portstoplains.com](http://www.portstoplains.com)**

**Heartland Expressway**

**[www.heartlandexpressway.com](http://www.heartlandexpressway.com)**

**Theodore Roosevelt Expressway**

**[www.trexpressway.com](http://www.trexpressway.com)**

**Government of Alberta, Canada**

**[alberta.ca/home/](http://alberta.ca/home/)**

**State of Coahuila, Mexico**

**[www.coahuila.gob.mx/](http://www.coahuila.gob.mx/)**





# PORTS-TO-PLAINS



## ALLIANCE

Securing the Benefits of Commerce to  
North America's Energy & Agriculture Heartland



# Heartland

EXPRESSWAY



# Theodore Roosevelt

EXPRESSWAY



# Thank You from the PTP Alliance Communities!